

**Fourteenth Annual  
Elizabeth S. Broughton Memorial Cross Country Invitational**

Race Date: Saturday, August 24, 2013

Your team is cordially invited to our annual invitational on the Marietta Tiger Cross Country course located at The Broughton Nature & Wildlife Area near Marietta ([broughtoncommercial.com/nature](http://broughtoncommercial.com/nature)). The course is a true cross country course with minimal paved drive crossings.

The Broughton Nature & Wildlife Area is located on State Route 821, 7/10ths of a mile north of the intersection of State Routes 60 and 821, and 2.5 miles south of the Route 821/Lower Salem/Marietta Exit No. 6 from Interstate 77. Parking is located 1/10<sup>th</sup> of a mile south of the Area.

As this is an early race we will not limit the number of varsity runners per team nor require their designation. That will allow early self-selection for your runners.

**Entry Fees:** \$125 per school allows entry in all the races

**Awards:** 1st and 2nd teams in High School races  
1st team in the Middle School races  
Plaques to: Top 20 individuals in the High School Races  
Top 10 individuals in the Junior High Races

**Course:** Course starts and ends at the green and white pavilion at the Nature Area. Maps will be provided.

**Parking:** Spectator parking is available in close proximity to the pavilion at a cost of \$5 per car. No parking is permitted along State Route 821.

<b>Tentative Event Schedule:</b>	Tour Course	9am
	Coaches' Meeting	9:45am
	High School Girls	10am
	High School Boys	10:40am
	Middle School Girls	11:20am
	Middle School Boys	11:50am

**Timing:** ChronoTrack B-Tag RFID Timing

Thanks for your support and consideration. We hope to see you in August. You and your team will not be disappointed with this meet and the challenging course.

**Questions:** Coach Dale Leeper: 740.373.5455  
Athletic Director, Rick Guimond @ Marietta High School: 740.374.6540  
Coach Leeper's email address: [leeper@theisenbrock.com](mailto:leeper@theisenbrock.com)  
AD Guimond's email address: [ma\\_rguimond@seovec.org](mailto:ma_rguimond@seovec.org)  
Call or e-mail for a contract.

Registration will be online through Baumspage, so please submit your rosters according to the instructions below no later than August 21 by 5:00 p.m. Additionally, send your registration fee of \$125 per school made payable to Marietta High School to the attention of the Athletic Director, Richard Guimond, Marietta High School, 208 Davis Avenue, Marietta, Ohio 45750 or register on MYOHSAA.

School \_\_\_\_\_

Address \_\_\_\_\_

Contact \_\_\_\_\_

email \_\_\_\_\_

Check teams you plan to enter:

Girls' High School \_\_\_\_\_

Girls' Middle School \_\_\_\_\_

Boys' High School \_\_\_\_\_

Boys' Middle School \_\_\_\_\_

## **2013 Elizabeth S. Broughton Memorial Cross Country Invitational**

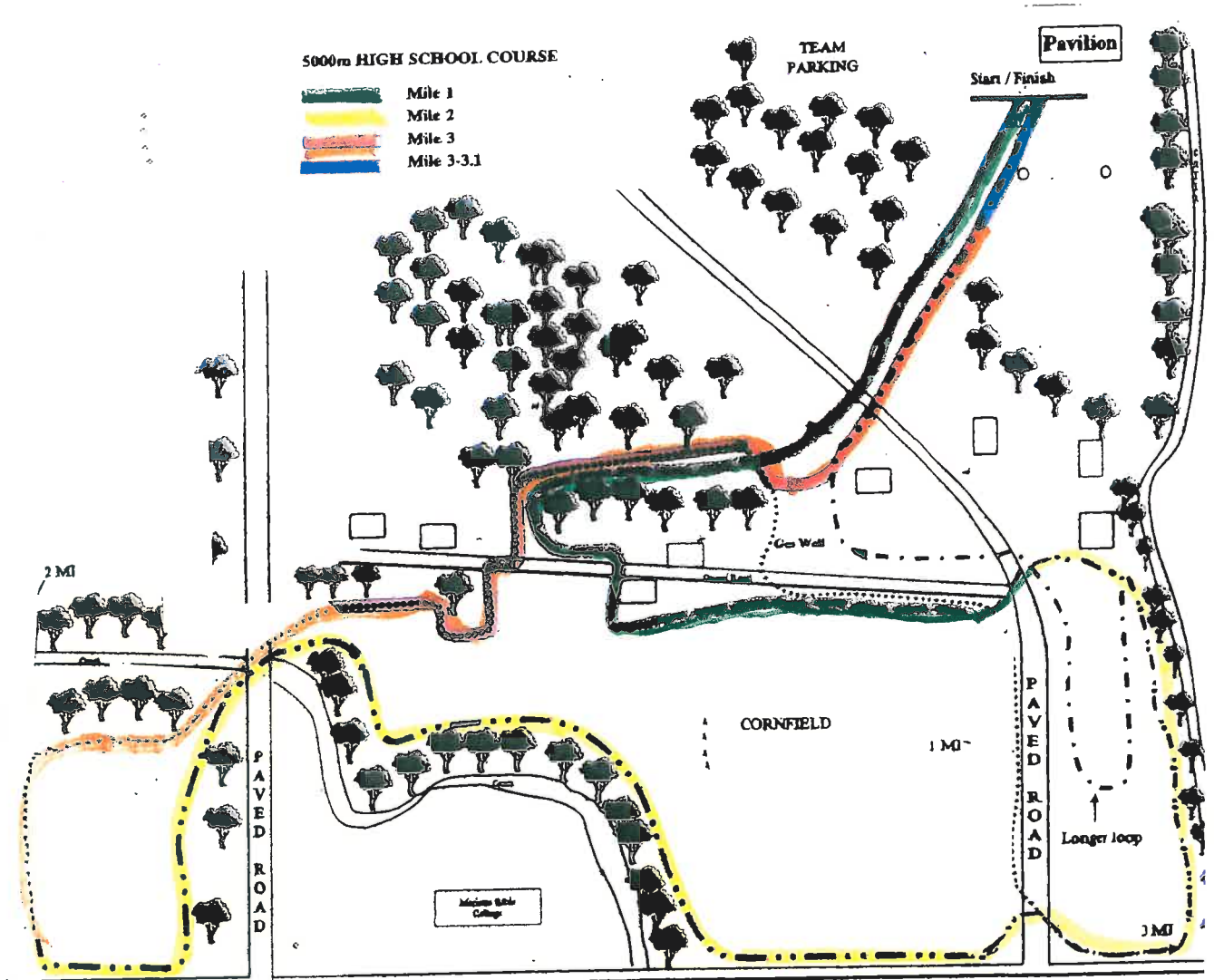
**August 24, 2013 - 9:00 a.m.**

The Entry Window will open at 8:00 AM on Sunday, August 11

**Entry Window will close precisely at 5:00 PM on Wednesday, August 21**

1. **Rosters must be submitted through Baum's Page Online Entry System before the entry deadline.**
  - a. **Late entries will not be accepted! Or if accepted, they will be subject to a Late Entry Penalty.**
2. **Go to [www.baumspage.com](http://www.baumspage.com), browse to Cross Country, the specific meet, and the Online Entry Form.**
  - a. **Click the Help link and print Online Entry Instructions for CC if you need detailed instructions.**
  - b. **All User Accounts are deleted every summer so everyone will need to Apply/Re-Apply for an account for the current school year.**
  - c. **Use Apply to create your account. Select School and one Sport from the drop-down menus.**
  - d. **Use Add/Drop Teams after login to add additional teams to the same account.**
3. **Use Add/Modify Athletes to enter your athletes and Submit Event Rosters to enter them in a meet.**
  - a. **Include everybody that could possibly compete! Submit a complete roster before entry deadline!!**
  - b. **If an athlete on your roster is definitely going to miss the meet, check the Not Participating box before you submit.**
  - c. **Click Save/Submit and Print Roster to save entries and Printable Roster and Confirmation Form button to print a copy for you records. \*Only the athletes listed are entered in the event!**
4. **If there are any problems with the Online Form, click the Help link and submit a Help Request.**
  - a. **Please allow up to 24 hours for a response! \* Most responses will be in less than 8 hours.**
  - b. **Send e-mail to [help@baumspage.com](mailto:help@baumspage.com) or call Gary Baumgartner at 513-424-6201 or Terry Young at 740-753-0561 if you need immediate help.**

(323403)



**Marietta High School's Cross Country Course**

# Parking Instructions for the Elizabeth Broughton Cross Country Invitational 8/24/13

We are pleased that improvements to the facilities used for the Broughton Invitational have resulted in an event parking lot. This lot is located about a quarter mile further down 821 of where you usually enter on the right hand side. This is where all buses and spectators (except handicapped) should park. No one will be blocked in and it will provide easy access to the course via the new pedestrian bridge. **DO NOT DROP TEAMS OFF AT THE OLD ENTRANCE.** They can cross the pedestrian bridge and put up their tents in the indicated areas.

Handicapped parking will be in the normal place and they can enter through the old entrance. When this lot is full, we will start parking through the old entrance. **THERE WILL BE NO PARKING ALONG SR 821.** Please inform your parents/spectators of the parking guidelines ahead of time. Parking for spectators is \$5 per car.

